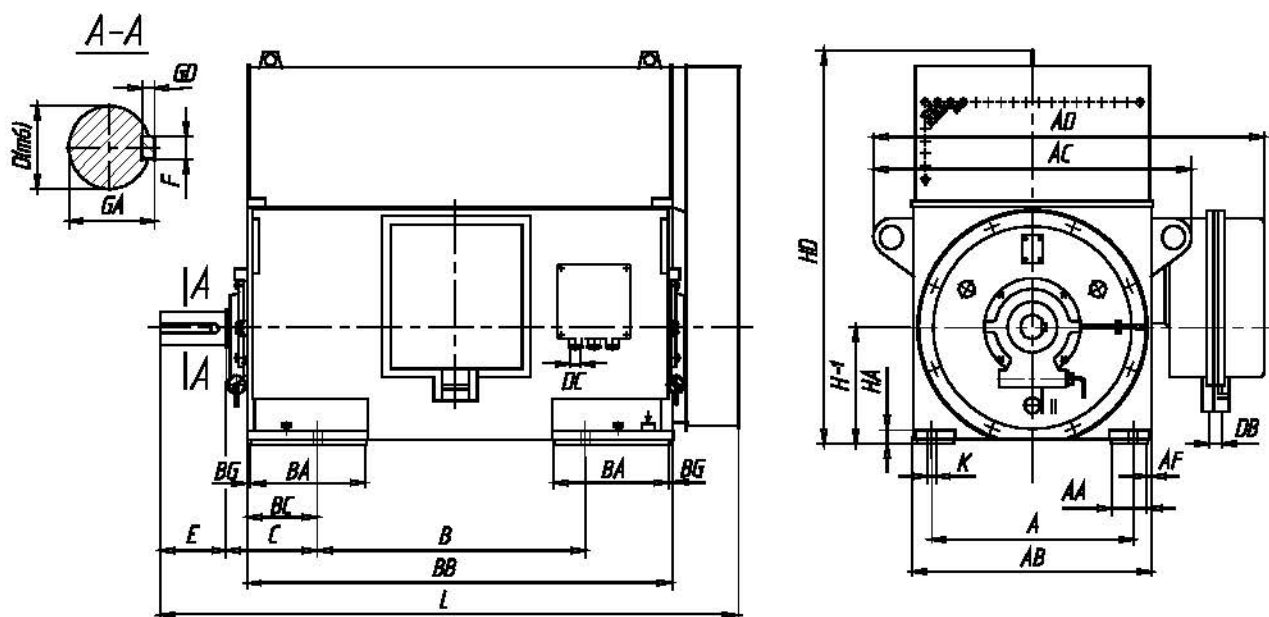


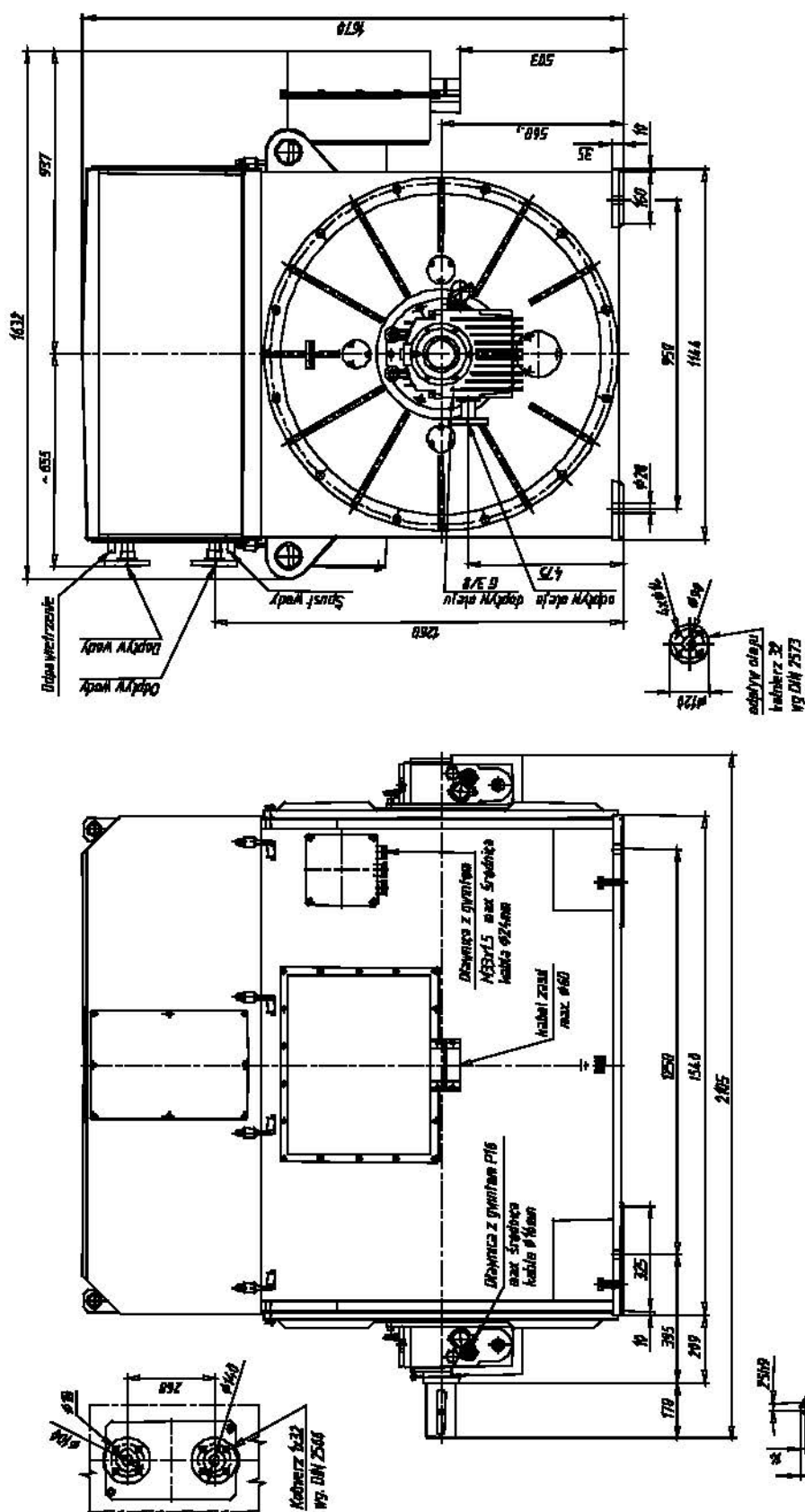
OVERALL AND MOUNTING DIMENSIONS



MECHANICAL CONSTRUCTION: IM1001 (B3)

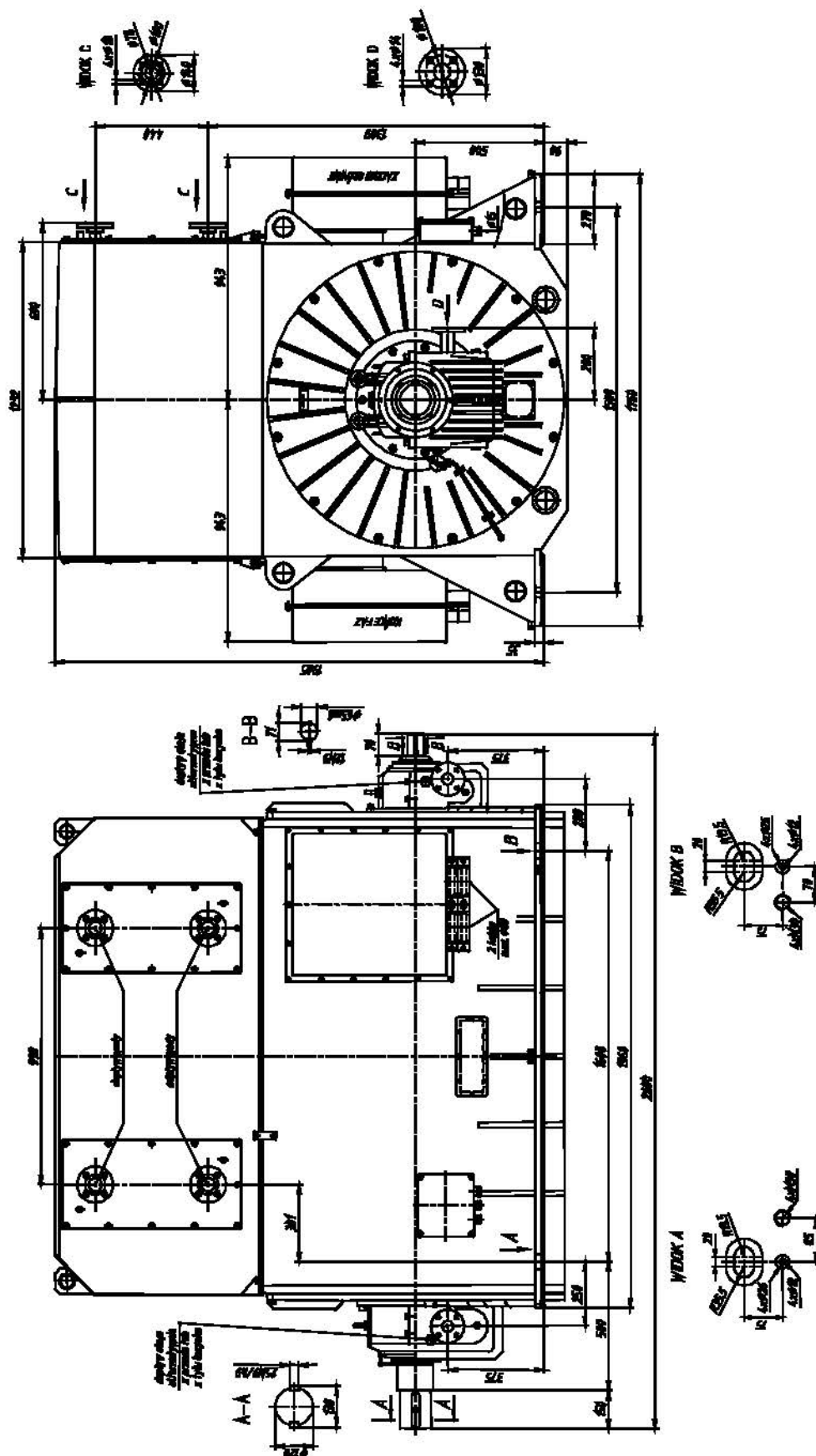
Typ silnika	Liczba biegunów	A	AA	AB	AC	AD	AF	B	BA	BB	BC	BG	C	D	DB	DC	E	F	GA	GD	H	HA	HD	K	L
Sf 315 Y-E	6	560	100	660	882	1110	11	800	320	1250	181	10	224	90	55	15	170	25	95	14	315	31	1085	28	1700
Sf 355 X-E	4-8	630	100	750	972	1195	10	800	320	1273	203	10	254	100	55	15	210	28	106	16	355	28	1303	28	1860
Sf 355 Y-E	2	630	100	750	972	1195	10	900	320	1273	203	10	254	75	55	15	140	20	79,5	12	355	28	1303	28	1930
Sf 355 Y-E	4-8	630	100	750	972	1195	10	900	320	1373	203	10	254	100	55	15	210	28	106	16	355	28	1303	28	1960
Sf 400 X-E	4-8	710	130	866	1092	1306	10	900	490	1540	203	10	280	110	55	15	210	28	116	16	400	32	1400	35	2136
Sf 400 Y-E	4-8	710	130	866	1092	1306	10	1000	490	1540	203	10	280	110	55	15	210	28	116	16	400	32	1400	35	2136
Sf 450 X-E	4-8	800	130	980	1198	1415	10	1000	390	1540	238	10	315	120	55	15	210	32	127	18	450	32	1603	35	2146
Sf 450 Y-E	4-8	800	130	980	1198	1415	10	1120	390	1540	238	10	315	120	55	15	210	32	127	18	450	32	1603	35	2146
Sf 560 X-E	4-8	1000	160	1144	1388	1592	10	1120	325	1540	202	10	280	120	55	15	210	32	127	18	560	30	1833	42	2151
Sf 560 Y-E	4-8	1000	160	1144	1388	1592	10	1120	325	1540	202	10	280	120	55	15	210	32	127	18	560	30	1833	42	2151
Sf 560 YB-E	4	1000	160	1144	1388	1592	10	1120	325	1540	202	10	280	125	55	15	210	32	132	18	560	30	1833	42	2151
Sf 560 H-E	4-8	1000	160	1144	1388	1592	10	1400	370	1868	234	10	315	140	55	15	250	36	148	20	560	30	1833	42	2520
Sf 560 HB-E	4-8	1000	160	1144	1388	1592	10	1400	370	1868	234	10	315	140	55	15	250	36	148	20	560	30	1833	42	2520
Sf 710 X	8-12	1250	200	1420	1596	1829	10	1250	500	1835	268	10	450	180	55	15	300	45	190	25	710	35	2300	42	2690
Sf 710 Y	8-12	1250	200	1420	1596	1829	10	1250	500	1835	268	10	450	180	55	15	300	45	190	25	710	35	2300	42	2690

OVERALL AND MOUNTING DIMENSIONS



SZKIC WYMIAROWY SILNIKÓW TYPU SFW560 J2A-G, J2B-G

OVERALL AND MOUNTING DIMENSIONS



SZKIC WYMIAROWY SILNIKÓW TYPU SFw710-2 A,B,C,D