

# SASA...15 (S) SERIES

FIRE & SMOKE DAMPER ACTUATOR 3 POINT NON SPRING RETURN CONTROL



## SASA...15 (S) SERIES

SASA Non-Spring Return actuators are developed for use with fire and smoke damper. The actuator motorized the damper or other devices when power on.

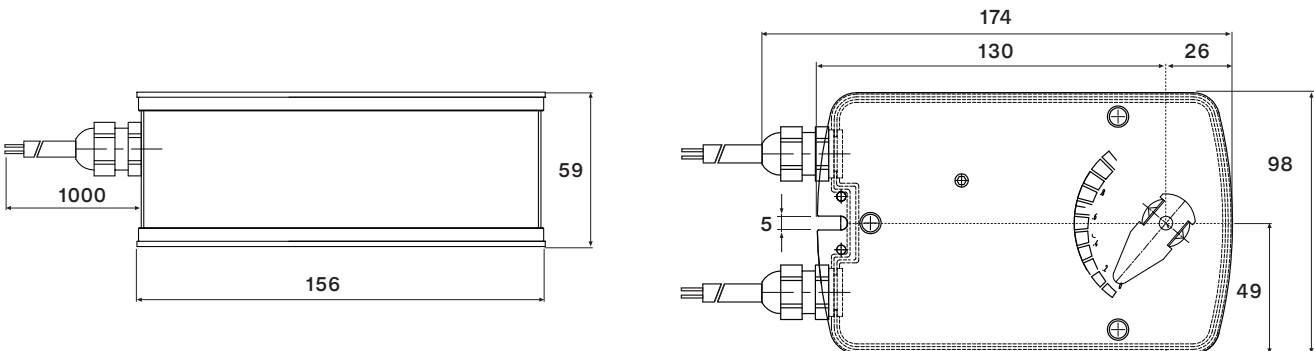
## PRODUCT FEATURE

- Torque 15 Nm
- Damper size 3.0 m<sup>2</sup>
- Power supply AC/DC 24V and AC 230 V
- Shaft dimensions - □ 12 mm
- Adapter supplied - □ 8/10 mm
- Selectable direction of rotation of reversing actuator
- 2 fixed auxiliary switches
- Manual over-ride by crank handle when required
- Anti-rotation bracket provided for stability

## MODEL SELECTION TABLE

MODEL / TYPE	TORQUE	POWER SUPPLY	RUNNING TIME	AUXILIARY SWITCH
SASA 1-15S	15 Nm	AC/DC 24 V ± 10%	< 30 sec	2 x SPDT (Fixed)
SASA 2-15S	15 Nm	AC 230 V ± 10%	< 30 sec	2 x SPDT (Fixed)

## DIMENSION (mm)



## TECHNICAL SPECIFICATION

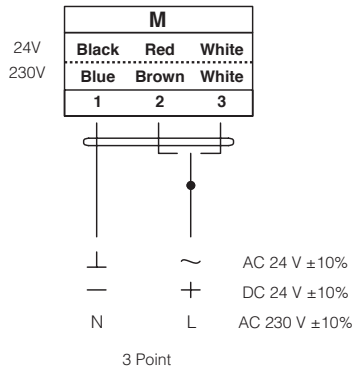
<b>MODEL NUMBER</b>	SASA 1-15 (S)	SASA 2-15 (S)
<b>TORQUE</b>	15 Nm	15 Nm
<b>DAMPER SIZE</b>	3.0 m <sup>2</sup>	3.0 m <sup>2</sup>
<b>SHAFT DIMENSION</b>	□ 12 mm*	□ 12 mm*
<b>POWER SUPPLY</b>	AC/DC 24 V ± 10%	AC 230 V ± 10%
<b>FREQUENCY</b>	50...60 Hz	50...60 Hz
<b>CONTROL SIGNAL</b>	3 point control	3 point control
<b>POWER CONSUMPTION</b>		
• <b>OPERATING</b>	5.0 W	5.0 W
• <b>END POSITION</b>	3.5 W	3.5 W
<b>FOR WIRE SIZING</b>	7.0 VA	7.0 VA
<b>ELECTRICAL CONNECTION</b>	1 m Cable	1 m Cable
<b>AUXILIARY SWITCH RATING</b>	2 (1.5) A, AC 250 V	2 (1.5) A, AC 250 V
<b>PROTECTION CLASS</b>	Class III ⚡	Class II ⚡
<b>ANGLE OF ROTATION</b>	90° (95° mechanical)	90° (95° mechanical)
<b>WEIGHT</b>	1.8 Kg	1.8 Kg
<b>LIFE CYCLE</b>	60,000 Rotation	60,000 Rotation
<b>SOUND LEVEL</b>	45 dB	45 dB
<b>IP PROTECTION</b>	IP54	IP54
<b>OPERATING TEMPERATURE</b>	-30°...50° as per IEC 721-3-3	-30°...50° as per IEC 721-3-3
<b>NON-OPERATING TEMPERATURE</b>	-30°...+60° C / IEC 721-3-2	-30°...+60° C / IEC 721-3-2
<b>AMBIENT HUMIDITY</b>	5%...95% rH non condensing / EN	5%...95% rH non condensing / EN
<b>MAINTENANCE</b>	Maintenance Free	Maintenance Free
<b>MODE OF OPERATION</b>	Type I / EN 60730-1	Type I / EN 60730-1
<b>EMC</b>	CE & ISO 9000 EN / EEC	CE & ISO 9000 EN / EEC

\*Note that shaft dimension has a tolerance offset of ± 0.2mm.

# SASA...15 (S) SERIES

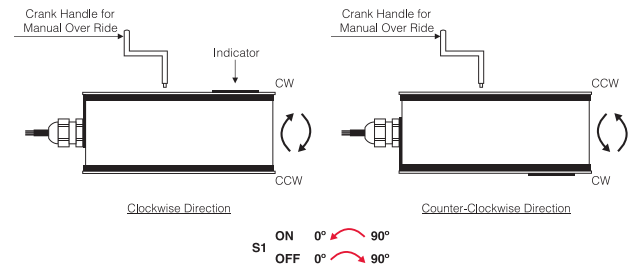
FIRE & SMOKE DAMPER ACTUATOR 3 POINT NON SPRING RETURN CONTROL

## WIRING DIAGRAM SASA...15 (S) POWER SUPPLY AC/DC 24V OR AC 230V

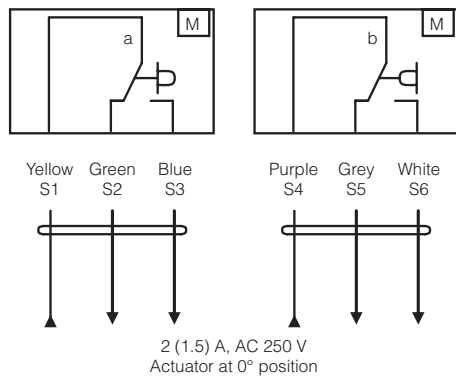


⚠ Connect via safety isolating transformer

## CHANGING DIRECTION OF ROTATION SASA...15 (S)



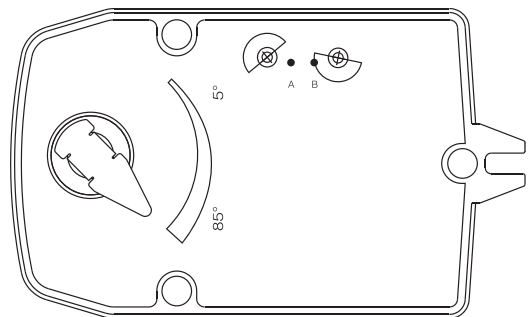
## WIRING DIAGRAM SASA...15 (S) AUXILIARY SWITCH



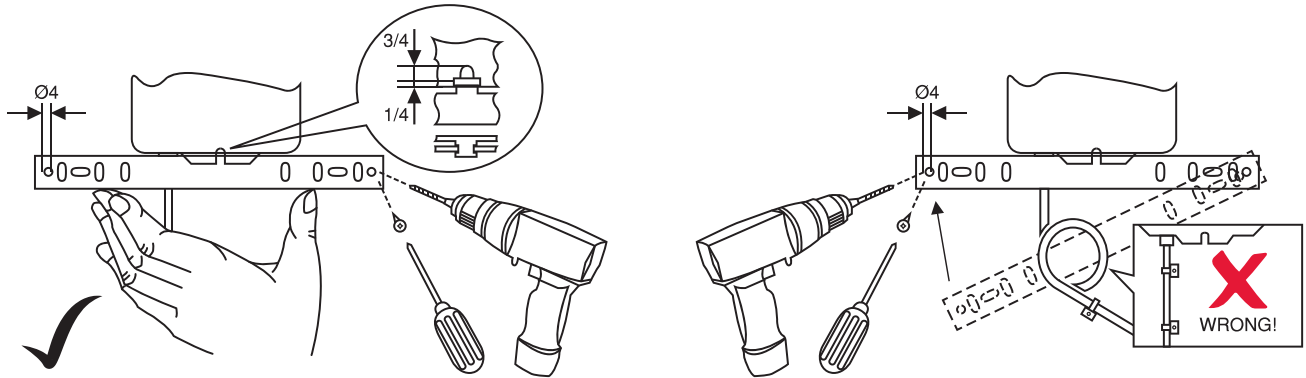
## AUXILIARY SWITCH SASA...15 (S)

Auxiliary switches are fixed at 5° for switch (a) and 85° for switch (b)

Both the auxiliary switches are non adjustable.



## INSTALLATION / MOUNTING INSTRUCTION



### IMPORTANT REMARK

For special requirement, consult your local Nenutec's representative.



This actuator includes electrical and electronic components and may not be disposed as household garbage. Please consider the local valid legislation.



AC / DC 24 V: Connect via safety isolating transformer.  
AC 230 V: To isolate from the main power supply, the system must incorporate a device which disconnects the phase conductor (with at least a 3mm contact gap.)

The performance specifications are nominal and conform to acceptable industry standards. NENUTEC shall not be liable for damages resulting from misapplication or misuse of its products.